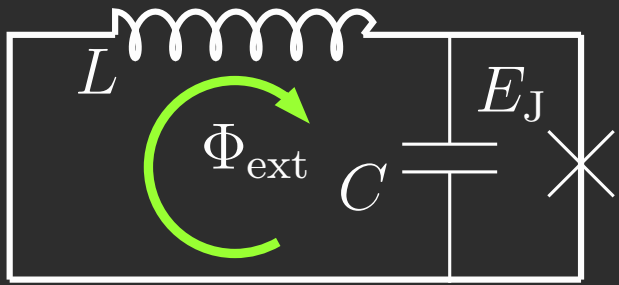


12/05/2018

Flux Qubit



$$L = \frac{1}{2} C \dot{\phi}^2 + E_J \cos 2\pi \frac{\phi}{\Phi_0} - \frac{1}{2L} (\phi - \Phi_{\text{ext}})^2$$

$$H = \frac{Q^2}{2C} - E_J \cos 2\pi \frac{\phi}{\Phi_0} + \frac{1}{2L} (\phi - \Phi_{\text{ext}})^2$$