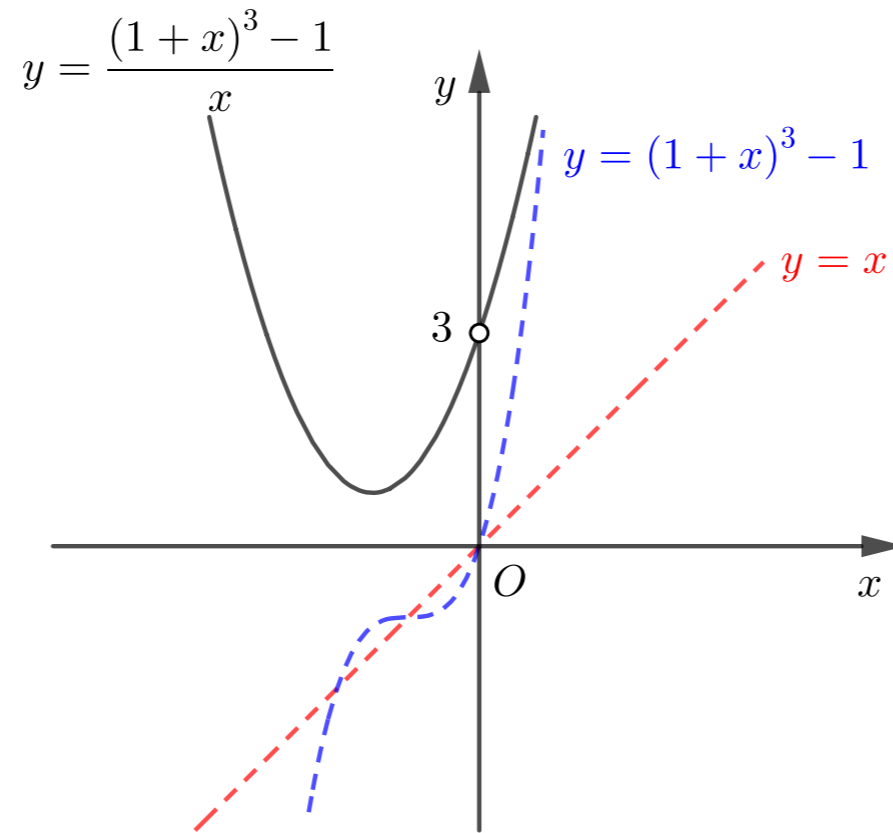
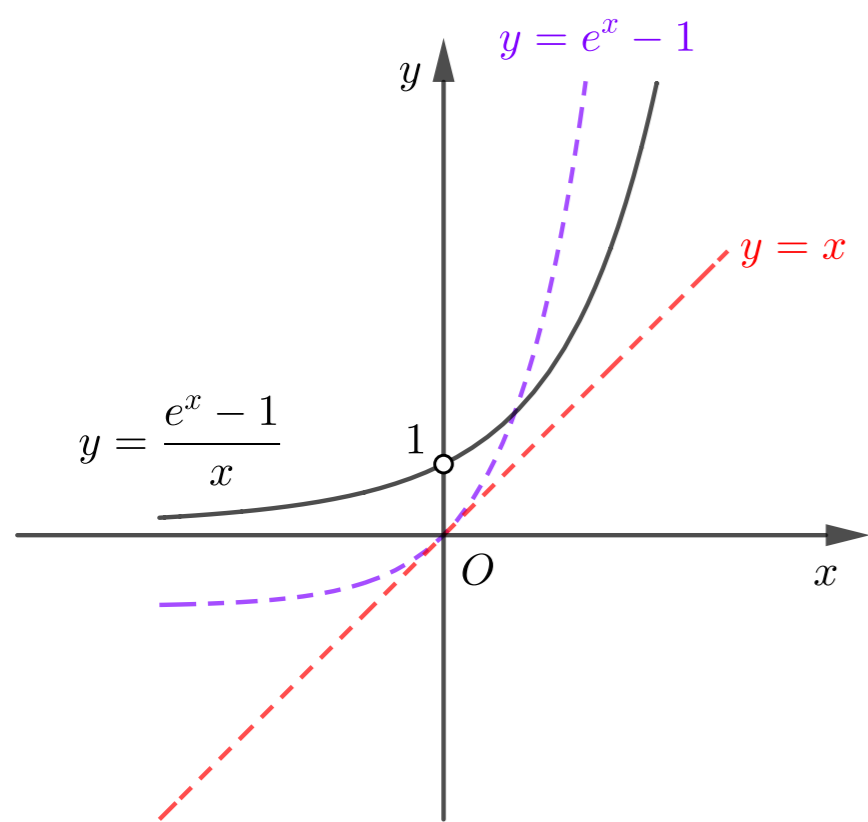


**Limiti notevoli di funzione esponenziali, logaritmiche e potenze**



$$\lim_{x \rightarrow \infty} \left(1 + \frac{1}{x}\right)^x = e$$

$$\lim_{x \rightarrow 0} \frac{\log_a(x+1)}{x} = \log_a e$$

$$\lim_{x \rightarrow 0} \frac{a^x - 1}{x} = \ln a$$

$$\lim_{x \rightarrow 0} \frac{(1+x)^\alpha - 1}{x} = \alpha \quad (\alpha \in \mathbb{R})$$