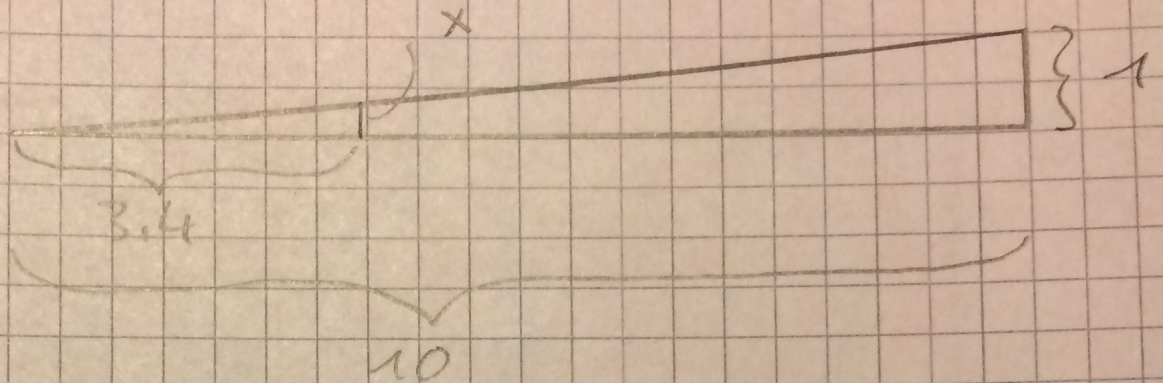


S. 128 | 1

a)



$$\frac{x}{3.4 \text{ cm}} = \frac{1}{10} \quad | \cdot 3.4$$

$$x = \frac{1}{10} \cdot 3.4 \text{ cm} = 0.34 \text{ cm}$$

Größe der Öffnung: 3.4 mm

2a)

$$\frac{h_1}{s_1} = \frac{h_2}{s_2}$$

$$\frac{h_1}{5.4 \text{ m}} = \frac{1.55 \text{ m}}{1.8 \text{ m}} \quad | \cdot 5.4 \text{ m}$$

$$h_1 = \frac{1.55}{1.8} \cdot 5.4 \text{ m}$$

$$h_1 = 4.65 \text{ m}$$