

Hoofdstuk II: rationale functies

www.karelappeltans.be

June 30, 2020

1 Definitie

Een rationale functie is een breuk van twee veeltermfuncties met $gr(N) \geq 1$

2 domein

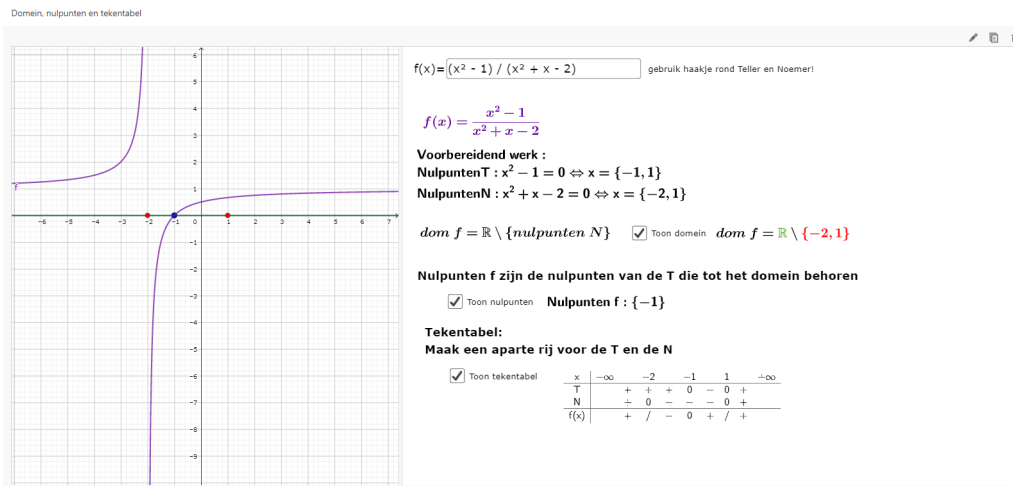


Figure 1: <https://www.geogebra.org/m/sz7kypag>

3 nulpunten

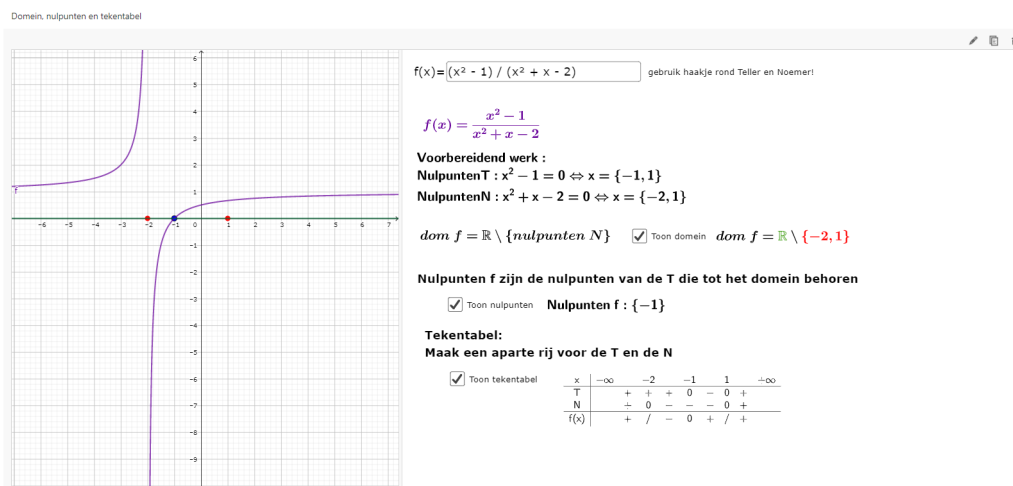


Figure 2: <https://www.geogebra.org/m/sz7kypag>

4 tekentabel

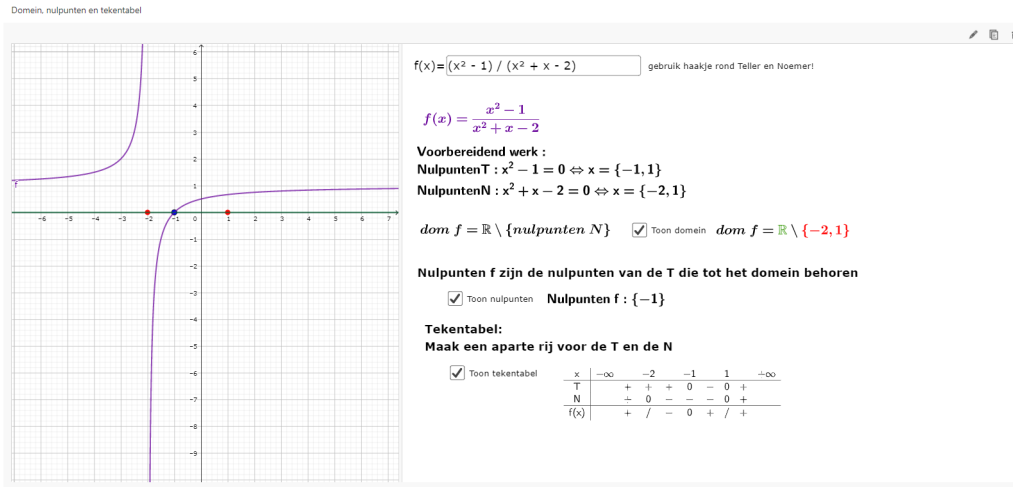


Figure 3: <https://www.geogebra.org/m/sz7kypag>

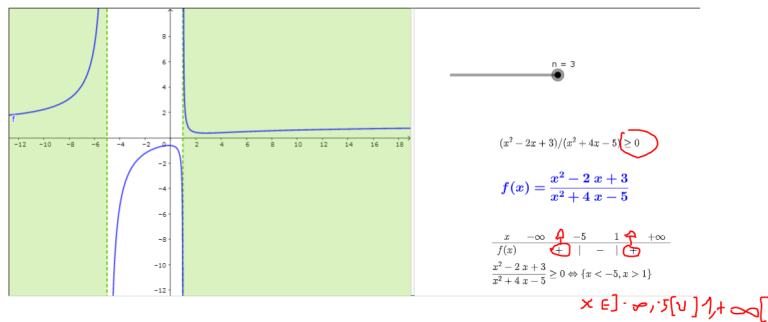


Figure 4: <https://www.geogebra.org/m/dR7jSdKn>

5 asymptoten en perforaties

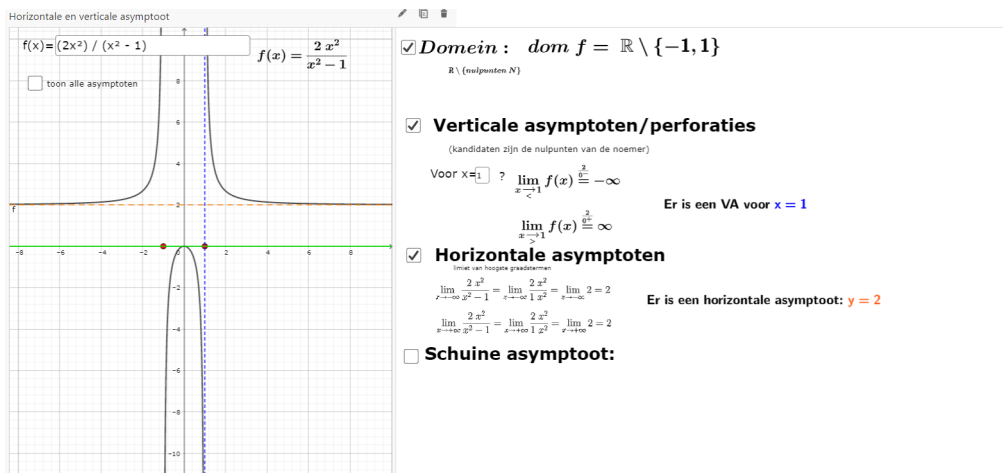


Figure 5: <https://www.geogebra.org/m/sz7kypag>

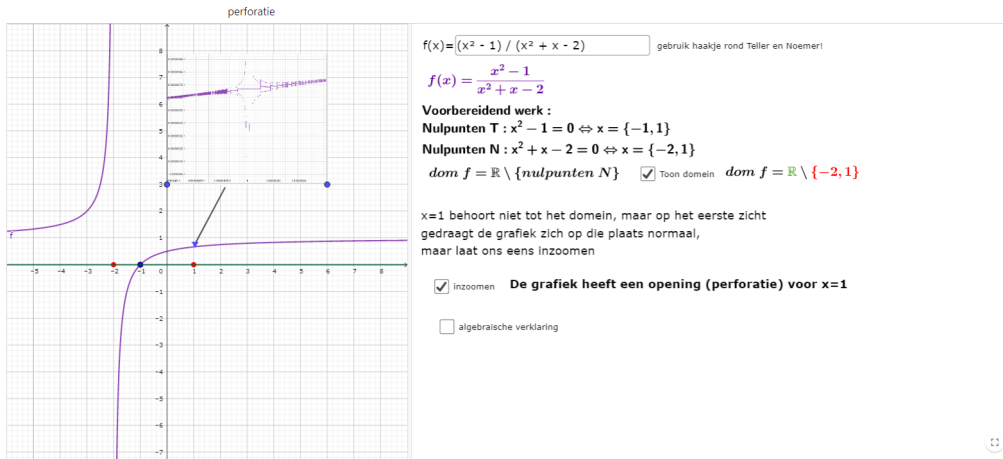


Figure 6: <https://www.geogebra.org/m/sz7kypag>

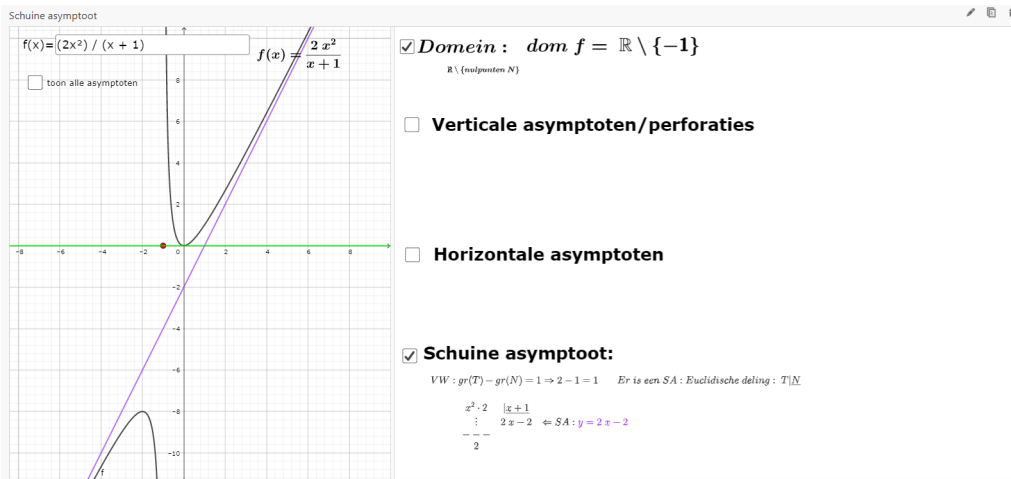


Figure 7: <https://www.geogebra.org/m/sz7kypag>

6 homografische functies

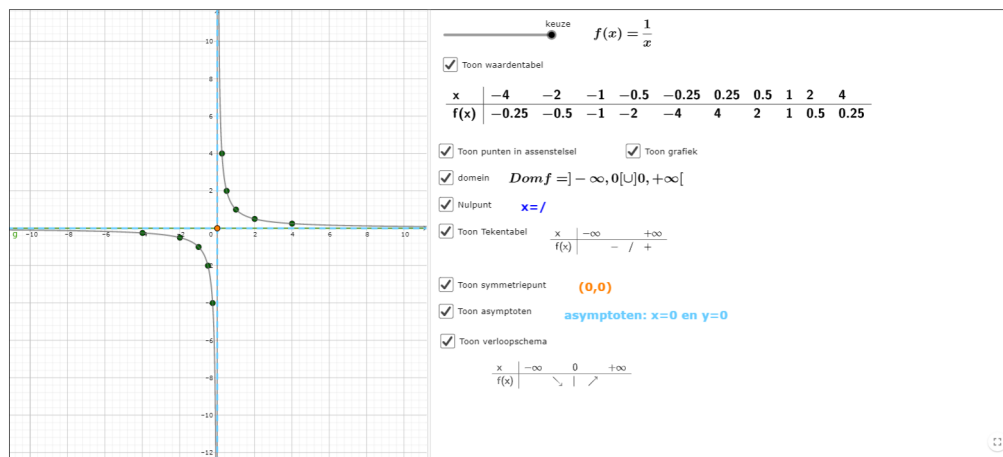


Figure 8: <https://www.geogebra.org/m/DaRnenDn>

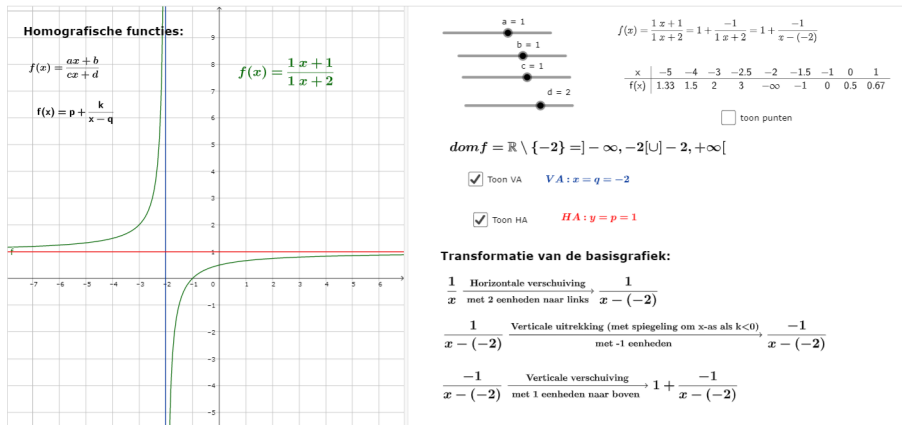


Figure 9: <https://www.geogebra.org/m/DaRnenDn>

7 toepassingen

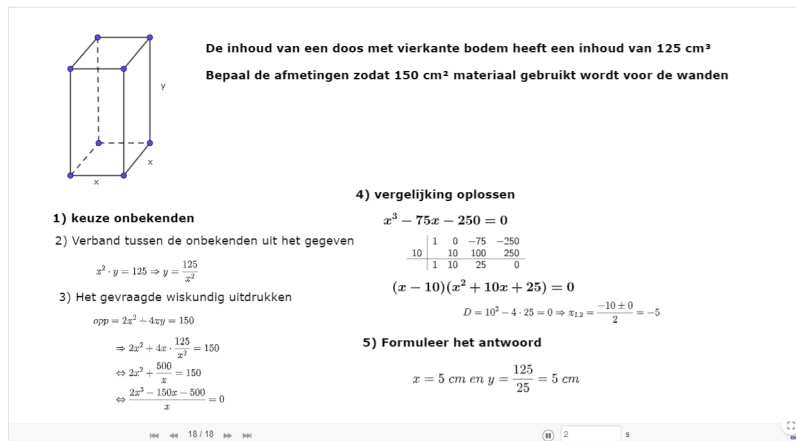


Figure 10: <https://www.geogebra.org/m/sz7kypag>

8 oefeningen

9 taken